

**TABLE I - STANDARD UNIT AIRFLOW RATING**

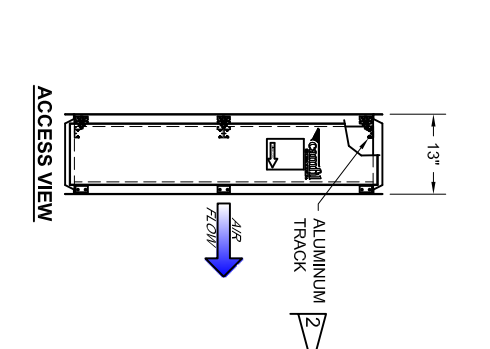
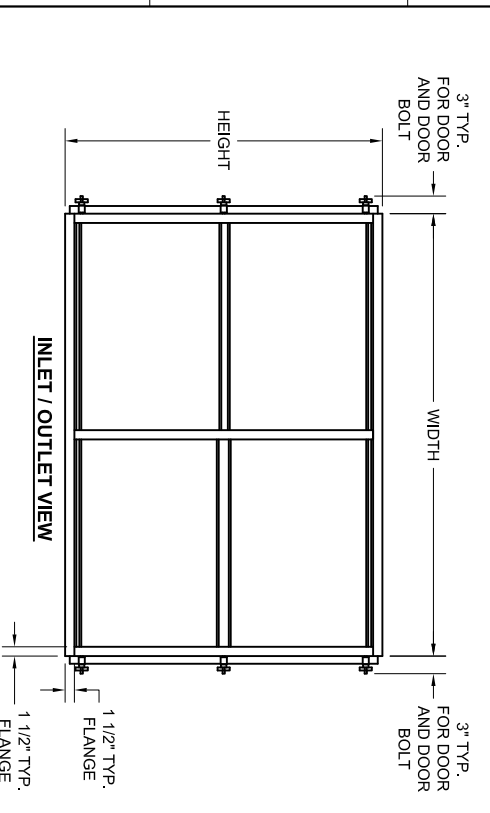
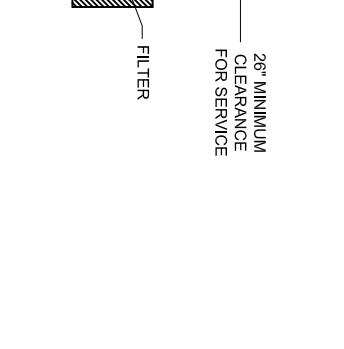
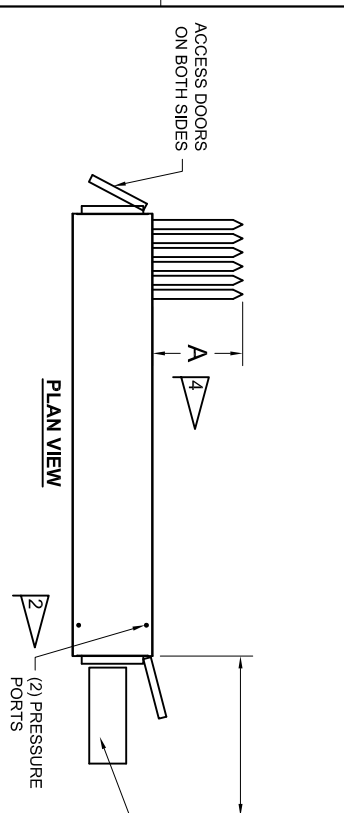
NO. OF FILTERS	1/2	1	1-1/2	2	2-1/2	3	3-1/2	4	4-1/2	5	5-1/2	6
WIDTH INCHES	11.38	23.38	34.75	46.75	51.13	70.13	81.50	93.50	104.88	116.88	128.25	140.25
HEIGHT INCHES	15.25	1.000	-	2.000	-	3.000	-	4.000	-	5.000	-	6.000
AIRFLOW CAPACITIES (CFM), AT 500 FPM	27.25	1,000	2,000	3,000	4,000	5,000	6,000	7,000	8,000	9,000	10,000	12,000
1-1/2	38.50	-	3,000	-	6,000	-	9,000	-	12,000	-	15,000	18,000
2	51.50	2,000	4,000	6,000	8,000	10,000	12,000	14,000	16,000	18,000	20,000	24,000
2-1/2	63.75	-	5,000	-	10,000	-	15,000	-	20,000	-	25,000	30,000
3	75.75	3,000	6,000	9,000	12,000	15,000	18,000	21,000	24,000	27,000	30,000	36,000
3-1/2	88.00	-	7,000	-	14,000	-	21,000	-	28,000	-	35,000	42,000
4	100.00	4,000	8,000	12,000	16,000	20,000	24,000	28,000	32,000	36,000	40,000	48,000

**TABLE II G/P HOUSING OPTIONS**

OPTION	DESCRIPTION
MT13	STANDARD
MT13D	INSULATED DOORS
MT13I	FULLY INSULATED
MT13H	HIGH PRESSURE (4x 8" W.G.)
MT13HD	HIGH PRESSURE INSULATED DOORS
MT13HI	HIGH PRESSURE FULLY INSULATED

**GENERAL NOTES:**

- UNIT IS COMPLETELY FACTORY ASSEMBLED. FOR CAPACITY REFER TO TABLE I. FOR APPLICATION REFER TO SALES BULLETIN 24-28 - (LATEST REV.)
- STANDARD MATERIAL OF CONSTRUCTION: 16 GA. GALVANIZED STEEL HOUSING, EXTRUDED ALUMINUM TRACKS WITH FIN SEAL. NEOPRENE DOOR GASKET AND PHENOLIC KNOBS FOR POSITIVE DOOR SEALING. TWO (2) PRESSURE PORTS INSTALLED UPSTREAM AND DOWNSTREAM!
- HOUSING OPTIONS:
  - (SPECIAL PRICING AND PART NUMBERS REQUIRED) 16 GA. 304/L, 316/L STAINLESS STEEL OR 0.0625 ALUMINUM HOUSING.
  - OTHER SPECIAL OPTIONS REQUIRE CAMFIL FARR SALES AND ENGINEERING CONSULTATION.
- "A" DIMENSION (EXTENSION PAST HOUSING) IS BASED ON THE FINAL FILTER BEING A BAG FILTER. SEE FILTER COMBINATIONS.
- ORDERING INFORMATION: SEE TABLE I AND II SPECIFY OPTIONS AND SIZE  
EXAMPLE:  
GP UT131 \* 2HX2W  
Options: GlidePack Housing Housing Height X Width  
Material: Blank = Galvanized (standard)  
I = Fully Insulated  
D = Insulated Doors  
H = High Pressure  
Note: Can be combined  
example HI = High Pressure and Insulated

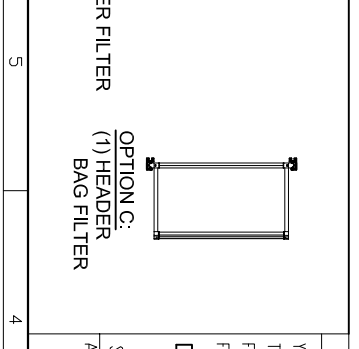


**FILTER COMBINATIONS:**

THERE ARE THREE FILTER COMBINATIONS THAT CAN BE INCLUDED INSIDE THE HOUSING, USING THE OPTIONS LISTED.

IF A HEADERED BAG FILTER IS USED, THE BAG WILL EXTEND OUTSIDE THE HOUSING PER THE FOLLOWING DIMENSION.

DEPTH	A
15	8.00
22	15.00
30	23.00
32	25.00
38	29.00



**CUSTOMER APPROVAL BLOCK**

YOUR APPROVAL OF THIS PRINT AUTHORIZES CAMFIL FARR TO PROCEED WITH MATERIAL PROCUREMENT, TOOLING AND PRODUCT FABRICATION. ANY CHANGES MADE AFTER APPROVAL MAY INCUR FURTHER EXPENSES TO THE CUSTOMER

OK AS IS     OK WITH REVISIONS     SEND REVISED DWG

SIGNATURE/DATE: \_\_\_\_\_ DATE: \_\_\_\_\_  
 APPROVED BY: \_\_\_\_\_ DATE: \_\_\_\_\_

DRAWN BY: \_\_\_\_\_ DATE: \_\_\_\_\_  
 TLC 4/16/12

©Camfil Farr <http://www.camfilfarr.com>

DESCRIPTION: CAMFIL FARR GLIDEPACK UNITRACK13 HOUSING SALES DRAWING

DRAWING NUMBER: M244 UT13

SHEET: 1 of 1

REV: -